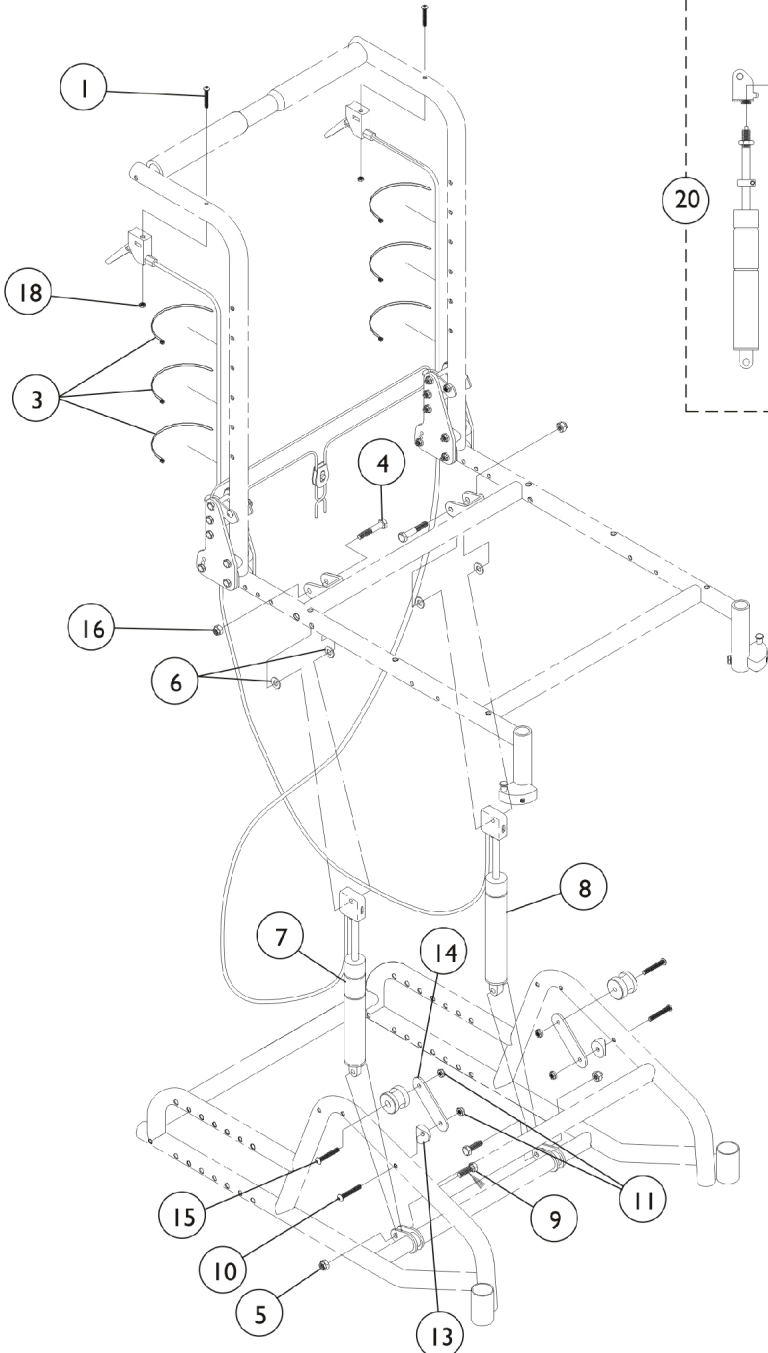
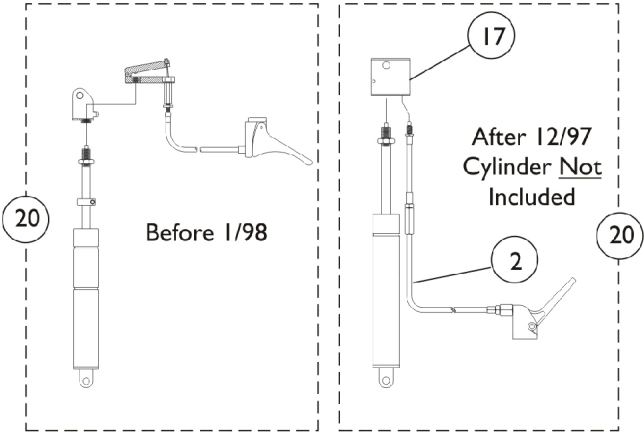
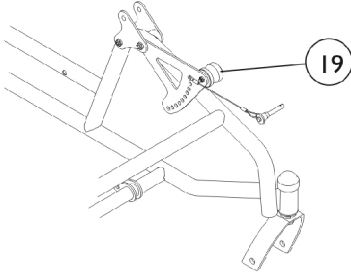


Tilt Hardware

Tilt Release Lever Kits



Adjustable Tilt Return Stop



Tilt Hardware

Item Number	Note	Part Number	Description	Quantity Per	
				Package	Assembly
1		1163311	Screw, Socket Button Head (10-32 x 1-1/4")	1	2
2		1078451	Release Handle Assembly w/ Cable	1	2
3		1021260	Tie Wrap (5-5/8" L)	1	6
4		1031891	Screw, Hex Head (5/16-24 x 2")	1	2
5		1028769	Locknut (5/16-18)	1	2
6		1026032	Washer, Nylon (11/32 x 11/16 x 1/16")	1	4
7		1046814	Cylinder, Lock - Right	1	1
8		1047705	Cylinder, Lock, Tilt - Left	1	1
9		1003548	Screw, Hex Head (5/16-18 x 1")	1	2
10		1008495	Screw, Socket Button Head (1/4-20 x 1-1/2")	1	2
11		7930323	Package, Locknut (1/4-20)	25	4
12		1048801	Block, Stop	1	2
13		40157X020	Spacer, Coved (1/4 x 1 x 9/16")	1	2
14		1048800	Plate, Stop Block	1	2
15		1008432	Screw, Socket Button Head (1/4-20 x 1-1/4")	1	2
16		1026906-NLA	NLA - Locknut (5/16-24)	1	2
17		1076567	Release, Cylinder	1	1
18		1025735	Locknut (#10-32)	1	2
19		1062736-NLA	NLA - Kit, Stop, Adjustable Tilt Return w/ Instructions (1 Pair)	2	1
20	C	1062775-NLA	NLA - Kit, Tilt Release Lever - Right	--	--
20	C	1062776-NLA	NLA - Kit, Tilt Release Lever - Left	--	--
20	A,D	1075264	Kit, Tilt Release Lever (Pair)	2	1
	B,E	1075265-NLA	NLA - Instruction Sheet, Tilt Release Lever	1	1
	B	1073707	Clamp, Cylinder with Screws	2	1

NOTE: A - Includes items 1-3,17, & 18. Cylinders NOT included see items 7 and 8.
 B - Not Shown
 C - Before 1/98
 D - After 12/97
 E - Item is no longer available from the Invacare Service Parts Department. Refer to the Invacare Website under "Product Literature Search". Enter the part number in the "Keywords" field and download a free PDF version copy.